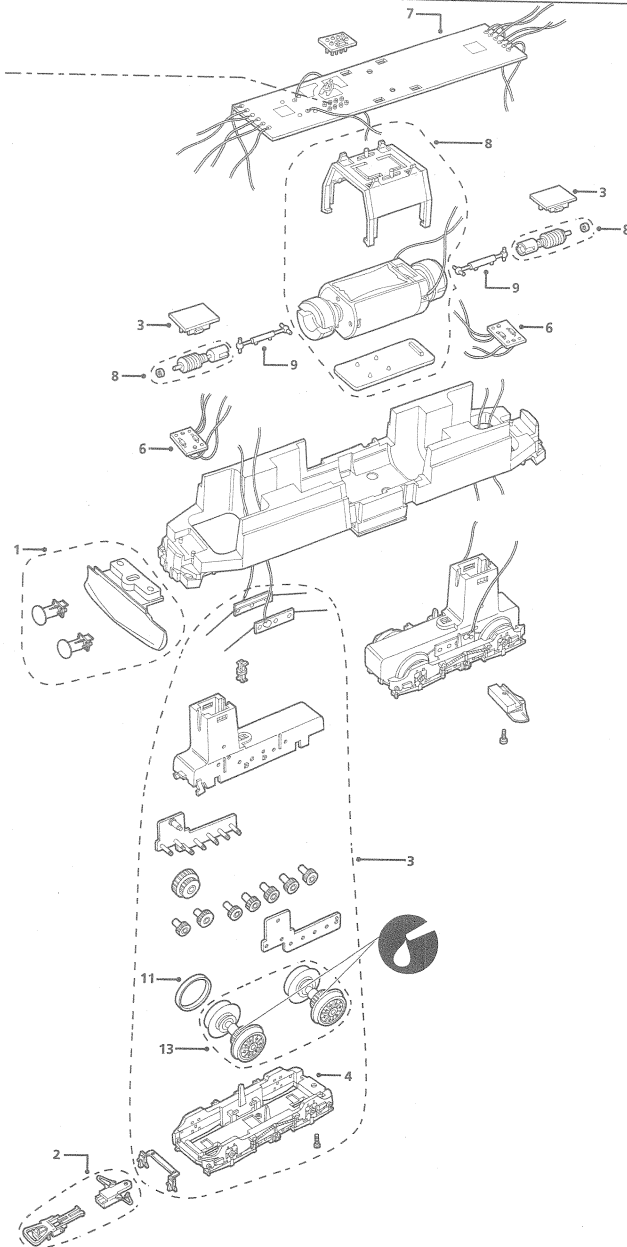
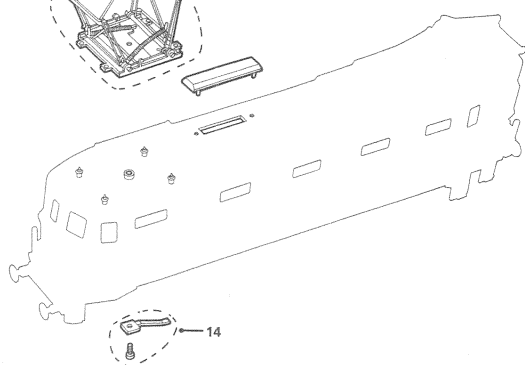
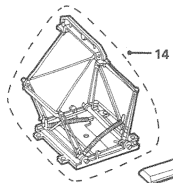
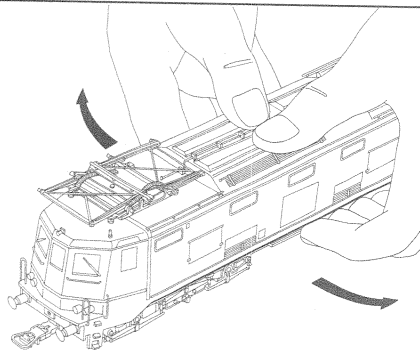
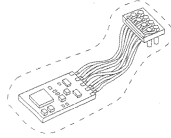


Remove dummy plug to fit dcc decoder

Zum Einbau des DCC-Decoders Dummystecker entfernen

Enlever la fiche dummy pour monter le décodeur dcc

Estrarre la finta spina per inserire il decoder dcc



LIST OF SPARES / ERSATZTEILLISTE / LISTE DE PIÈCES DE RECHANGE / LISTA RICAMBI

Item No. Art.-Nr. Référence N° di parte	Description Bezeichnung Description Descrizione	Pack Pckg. Pack Confezione	HR2179
1	Assembly/Buffer Pack Baugruppen/Puffer-Satz Ensemble/Pack de tampons Confezione complessivo/Respingente	pack	HR2179/1
2	Coupling pack Kupplungssatz Pack d'attelage Confezione attacco	pack	HR2179/2
3	Drive Unit Antrieb-Satz Unité d'entraînement Trasmissione	1	HR2179/3
4	Bogie Assembly Drehgestell Bogie Carrello	pack	HR2179/4
6	Lights board Lichtleiterplatte Carte de circuit imprimé Éclairage Scheda circuito stampato luci	1	HR2179/6
7	Main PCB board Hauptleiterplatte Carte principale de circuit imprimé Scheda principale a circuiti Stampati	1	HR2179/7
8	Motor Pack Motor-Satz Pack moteur Confezione motore	1	HR2179/8
9	Universal shaft pack Universal-Wellensatz pack Axle Universel Confezione Albero Universale	pack	HR2179/9
11	Traction Tyres Pack Haftreifen Bandages d'adhérence Pneumatici Trazione	pack	HR2179/11
13	Wheel set (drive unit) Radsatz für Antrieb Jeu de roues unité motrice Azionamento set ruote	set	HR2179/13
14	Pantograph set Stromabnehmer-Satz Jeu de pantographes Set pantografo	set	HR2179/14