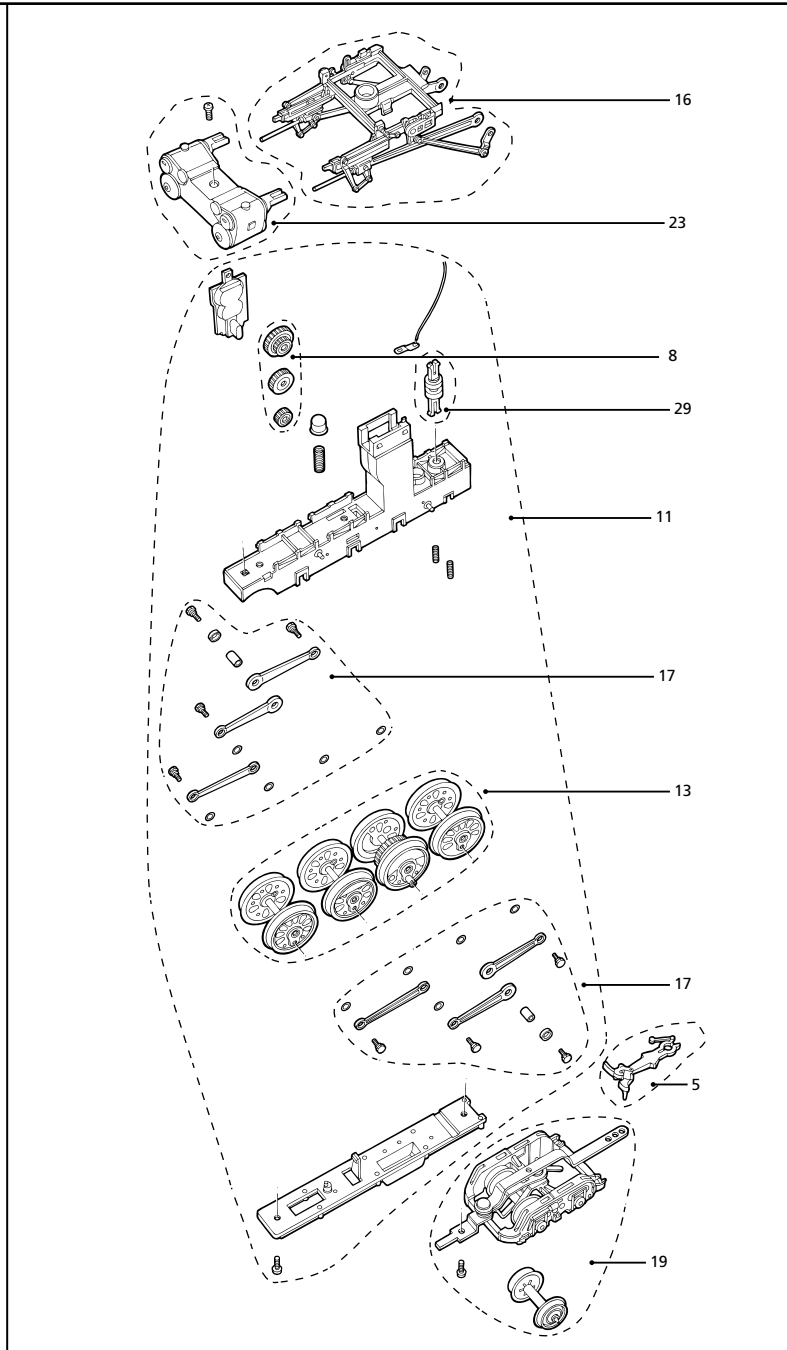
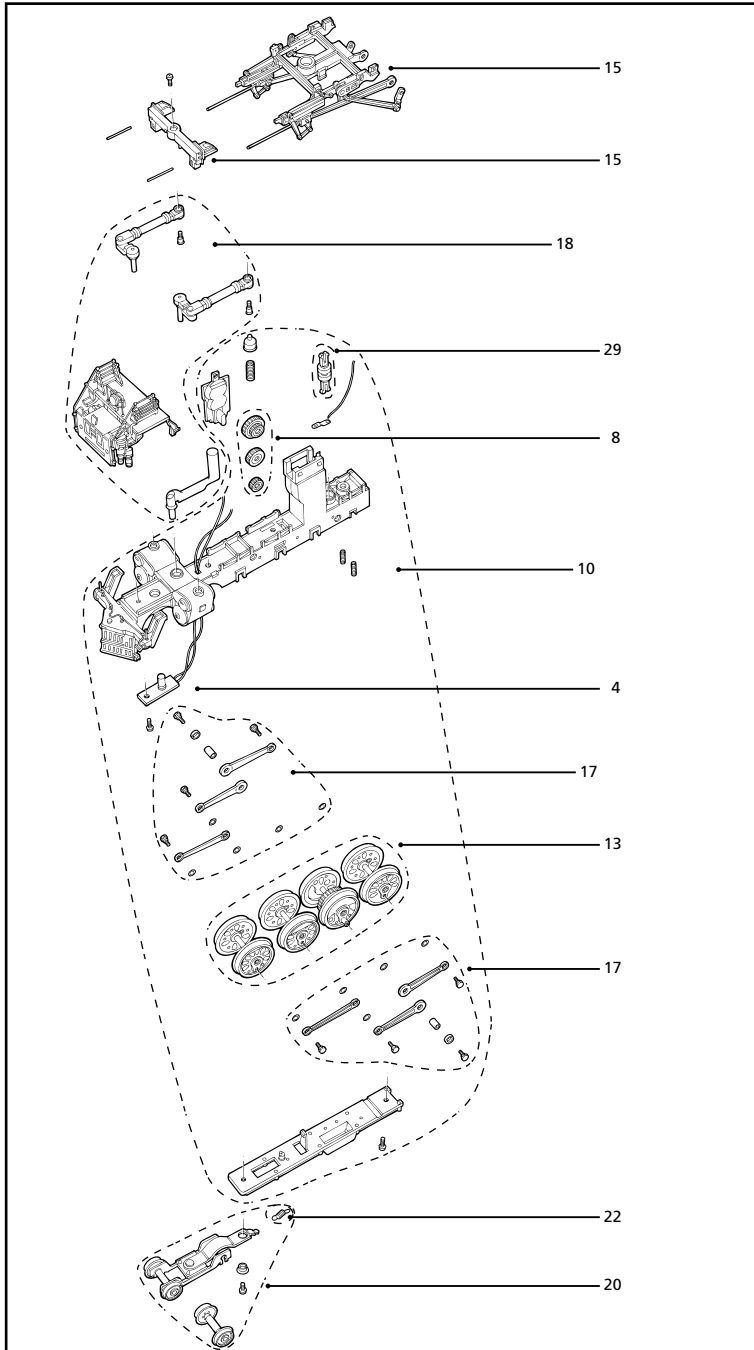


### LISTA RICAMBI / ERSATZTEILLISTE / LIST OF SPARES

N° di parte Teil-Nr. Part No.	Descrizione Bezeichnung Description	N° di ricambi Ersatzteil-Nr. Spare part ref.
1	Motore + Volano Motor + Schwungscheibe Motor + Flywheel	HR2357/01
2	Supporto motore Motorhalterung Motor Support	HR2357/02
3	Scheda principale a circuiti stampati Hauptleiterplatte Main PCB Board	HR2357/03
4	Scheda circuito stampato luci Lichtleiterplatte Lights Board	HR2357/04
5	Confezione attacco Kupplungssatz Coupling Pack	HR2357/05
6	Gruppo pignone solido / Albero Schneckenantriebs-/ Wellen-Baugruppe Worm Pinion / Shaft Assembly	HR2357/06
7	Confezione albero universale Universal-Wellensatz Universal Shaft Pack	HR2357/07
8	Set ingranaggi Zahnrad-Satz Gear Set	HR2357/08
9	Carter trasmissione Getriebe-Abdeckung Gear Box Cover	HR2357/09
10	Azionamento anteriore Antriebseinheit vorn Drive Unit Front	HR2357/10
11	Azionamento posteriore Antriebseinheit hinten Drive Unit Rear	HR2357/11
12	Carrello anteriore tender (con ruote) Drehgestell vorn (Tender, mit Rädern) Front Bogie Tender (with wheels)	HR2357/12
13	Set ruote (Loco) Radsatz (Lok) Wheel Set (Loco)	HR2357/13
14	Set ruote (Tender) Radsatz (Tender) Wheel Set (Tender)	HR2357/14
15	Set distribuzione (anteriore) Steuerungs-Satz (vorn) Valve Gear Set (Front)	HR2357/15
16	Set distribuzione (posteriore) Steuerungs-Satz (hinten) Valve Gear Set (Rear)	HR2357/16



### LISTA RICAMBI / ERSATZTEILLISTE / LIST OF SPARES

N° di parte Teil-Nr. Part No.	Descrizione Bezeichnung Description	N° di ricambi Ersatzteil-Nr. Spare part ref.
17	Bielle Kuppelstangen Connection rods	HR2357/17
18	Confezione piattaforma (4008) Plattform-Satz (4008) Platform Pack (4008)	HR2469/18
18	Confezione piattaforma (4015) Plattform-Satz (4015) Platform Pack (4015)	HR2470/18
19	Carrello posteriore loco (con ruote) Drehgestell hinten (Lok, mit Rädern) Bogie Rear Loco (with wheels)	HR2357/19
20	Carrello anteriore loco (con ruote) Drehgestell vorn (Lok, mit Rädern) Bogie Front Loco (with wheels)	HR2357/20
21	Carrello posteriore tender (con ruote) Drehgestell hinten (Tender, mit Rädern) Rear Bogie Tender (with wheels)	HR2357/21
22	Molle carrello Drehgestellfedern Bogie Springs	HR2357/22
23	Blocco cilindri Zylinderblock Cylinder Block	HR2357/23
24	Confezione estremità tender (4008) Tender-Endwände-Satz (4008) Tender Ends Pack (4008)	HR2469/24
24	Confezione estremità tender (4015) Tender-Endwände-Satz (4015) Tender Ends Pack (4015)	HR2470/24
25	Confezione aggancio tender Tender-Kupplungs-Satz Tender Coupling Pack	HR2357/25
26	Connettore tender/loco Tender-Lok-Steckverbinder Tender to Loco Connector	HR2357/26
27	Confezione viti (per tender) Schrauben-Satz (für Tender) Screws Pack (for tender)	HR2357/27
28	Confezione viti (corpo) Schrauben-Satz (Lokomotivkörper) Screws Pack (body)	HR2357/28
29	Confezione perno centrale Drehzapfen-Satz Centre Pin Pack	HR2357/29
30	Confezione Compressivo (per loco) Baugruppen-Satz (für Lok) Assembly Pack (for loco)	HR2357/30