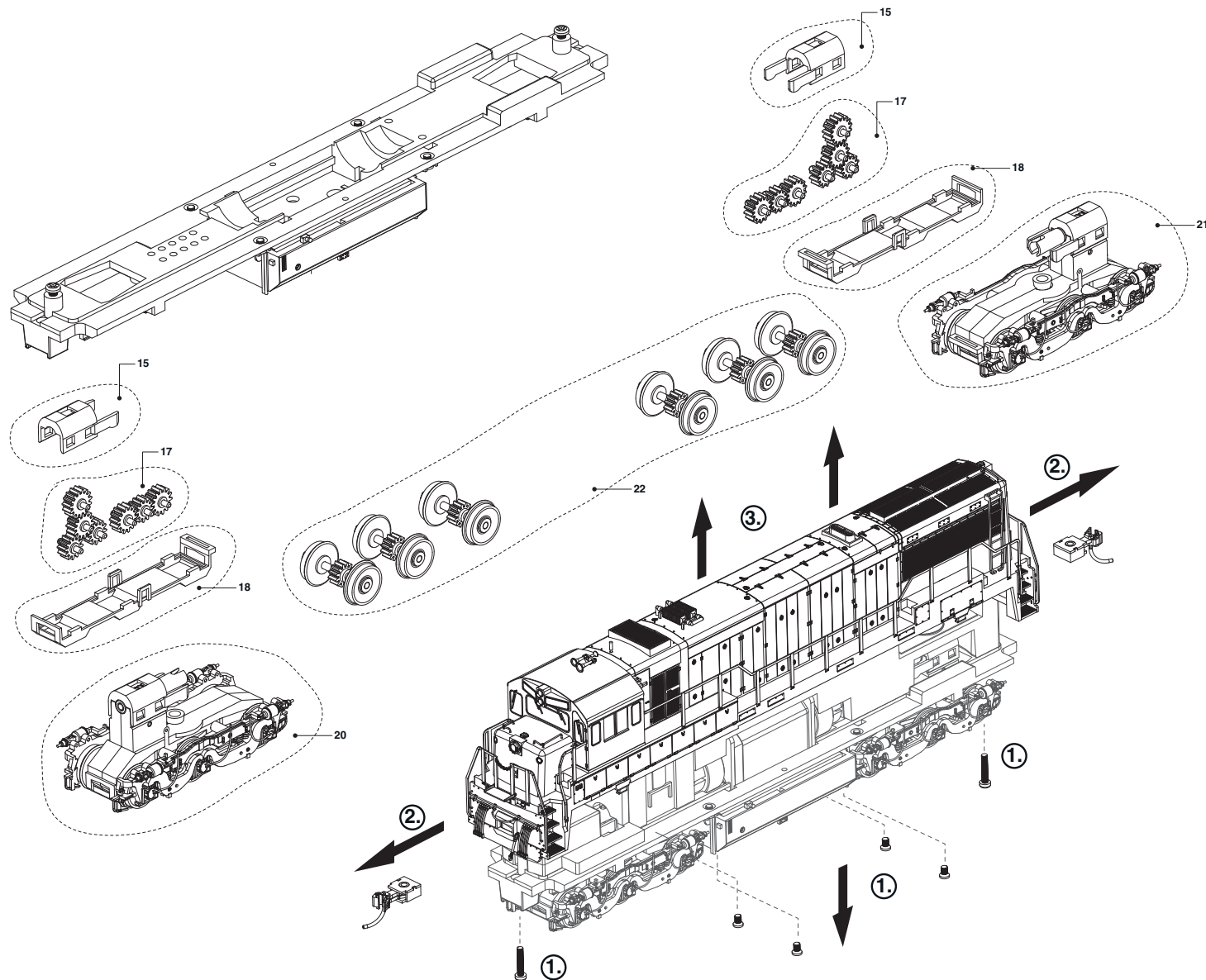


LIST OF SPARES / ERSATZTEILLISTE / LISTA RICAMBI

Item No. Teil-Nr.	Description Bezeichnung		Spare part ref. Ersatzteil-Nr.
1	Bodyshell accessories Gehäusezubehörteile	HR2885/86 HR2887/88	HR2520/01 HR2887/01
2	Bodyshell grills Geätzte Gitter	HR2885/86 HR2887/88	HR2520/02 HR2621/02
6	Couplers pack Kupplungsatz		HR2520/06
7	Additional parts for buffer beam Zurüstteile für Pufferbohle		HR2520/07
8	Photo-etched steps Geätzte Trittstufen	HR2885/86 HR2887/88	HR2520/08 HR2621/08
9	Walkway handrails Umlaufgeländer	HR2885/86 HR2887/88	HR2520/09 HR2623/09
10	LED PCB's LED-Platinen Spitzenbeleuchtung		HR2520/10
11	Main PCB incl. digital dummy plug Hauptleiterplatte inkl. Schnittstelle		HR2520/11
12	Worm gears Antriebsschnecken		HR2520/12
13	Cardanic shafts Kardanwellen		HR2520/13
14	Motor + motor support Motor + Motorhalterung		HR2520/14
15	Gear Box Cover Pack Getriebe-Abdecksatz		HR2520/15
17	Gears Zahnräder		HR2520/17
18	Bogie base Drehgestellbodenabdeckung		HR2520/18
20	Complete bogies Drehgestelle, komplett	HR2885/86 HR2887/88	HR2520/20 HR2887/20
21	Complete bogie Drehgestell, komplett	HR2885/86 HR2887/88	HR2520/21 HR2887/21
22	Wheel set Radsätze		HR2520/22

Remove dummy plug to fit digital decoder
Zum Einbau des Digital-Decoders
Dummstecker entfernen



Rivarossi HO Scale U25C Assembly and Dis-Assembly instructions

To Dis-Assemble:

1. Remove 4 screws (short) on either end of the fuel tank.
2. Remove coupler pocket screws (long) at each end and remove couplers from each end of unit.
3. Gently grasp body shell and lift straight up to uncover mechanism.

To Re-Assemble:

1. Gently grasp body shell and place on mechanism- taking care to line up screw holes.
2. Insert couplers from the ends and line up screw holes – insert longer screws to attach couplers.
3. Insert and secure 4 short screws at either end of fuel tank.