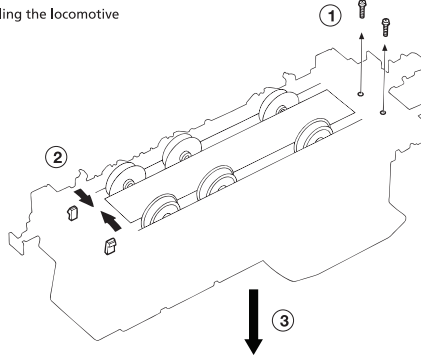
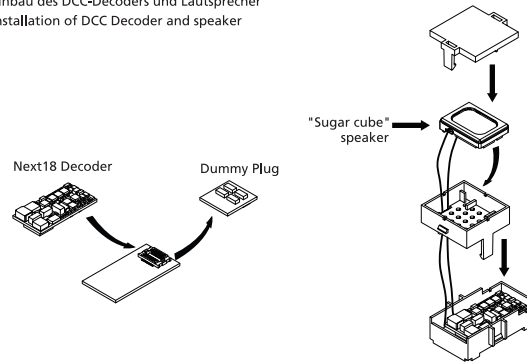


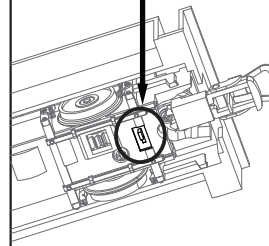
Apertura della locomotiva  
Demontage der Lokomotive  
Disassembling the locomotive



Installazione di decoder DCC ed altoparlante  
Einbau des DCC-Decoders und Lautsprecher  
Installation of DCC Decoder and speaker



Interruttore per luci in "modalità di manovra",  
sempre accese in entrambi i sensi di marcia.  
Switch for lights in "shunting mode", always ON  
in both running directions.



### LISTA RICAMBI / ERSATZTEILLISTE / LIST OF SPARES

Numero Teil-Nr. Part No.	Descrizione Bezeichnung Description		Cod. ricambio Ersatzteil-Nr. Spare part ref.
1	Set particolari carrozzeria	<b>HR2931</b>	HR2791/01
	Zubehör-Set		HR2932/01
2a 2b	Set corrimani	<b>HR2931</b>	HR2931/02
	Griffstange		HR2932/02
3	Circuiti stampati luci e prismi		HR2791/03
	Lichtleiterplatte + lichtleiter		
4	Circuito stampato principale		HR2791/04
	Hauptleiterplatte		
5	Vite senza fine con coperchio		HR2791/05
	Antriebschnecke mit Getriebeabdeckung		
6	Motore con supporto		HR2791/06
	Motor-Satz		
7	Set Ingranaggi		HR2791/07
	Zahnräder		
8	Set ganci modellistici + portaganci		HR2791/08
	Kupplungssatz		
9	Fondo telaio	<b>HR2931</b> <b>HR2932</b>	HR2931/09
	Fahrwerksabdeckung		HR2791/09
10	Lamelle presa di corrente		HR2791/10
	Radstromabnehmer		
11	Set ruote		HR2791/11
	Radsatz		
12	Set panconi ed accessori	<b>HR2931</b> <b>HR2932</b>	HR2931/12
	Puffer-Satz		HR2932/12
	Buffer pack		